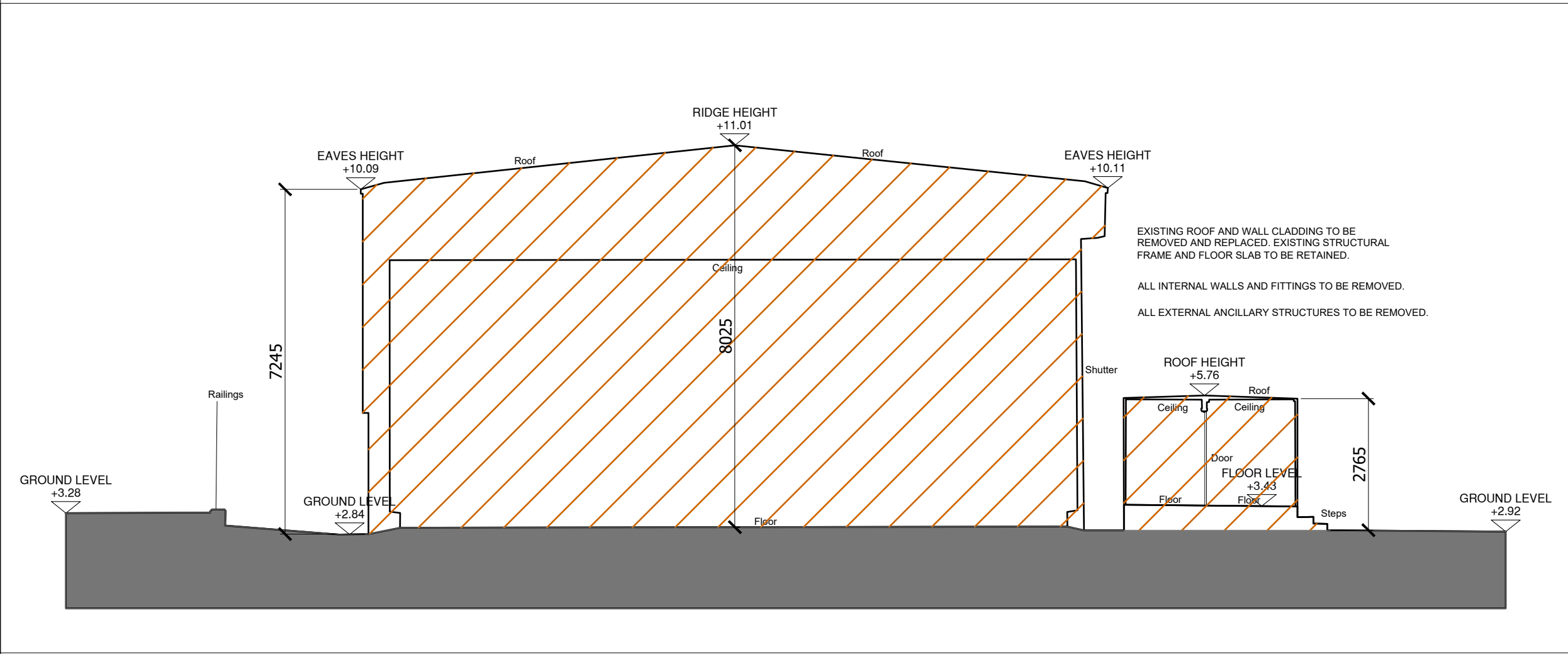
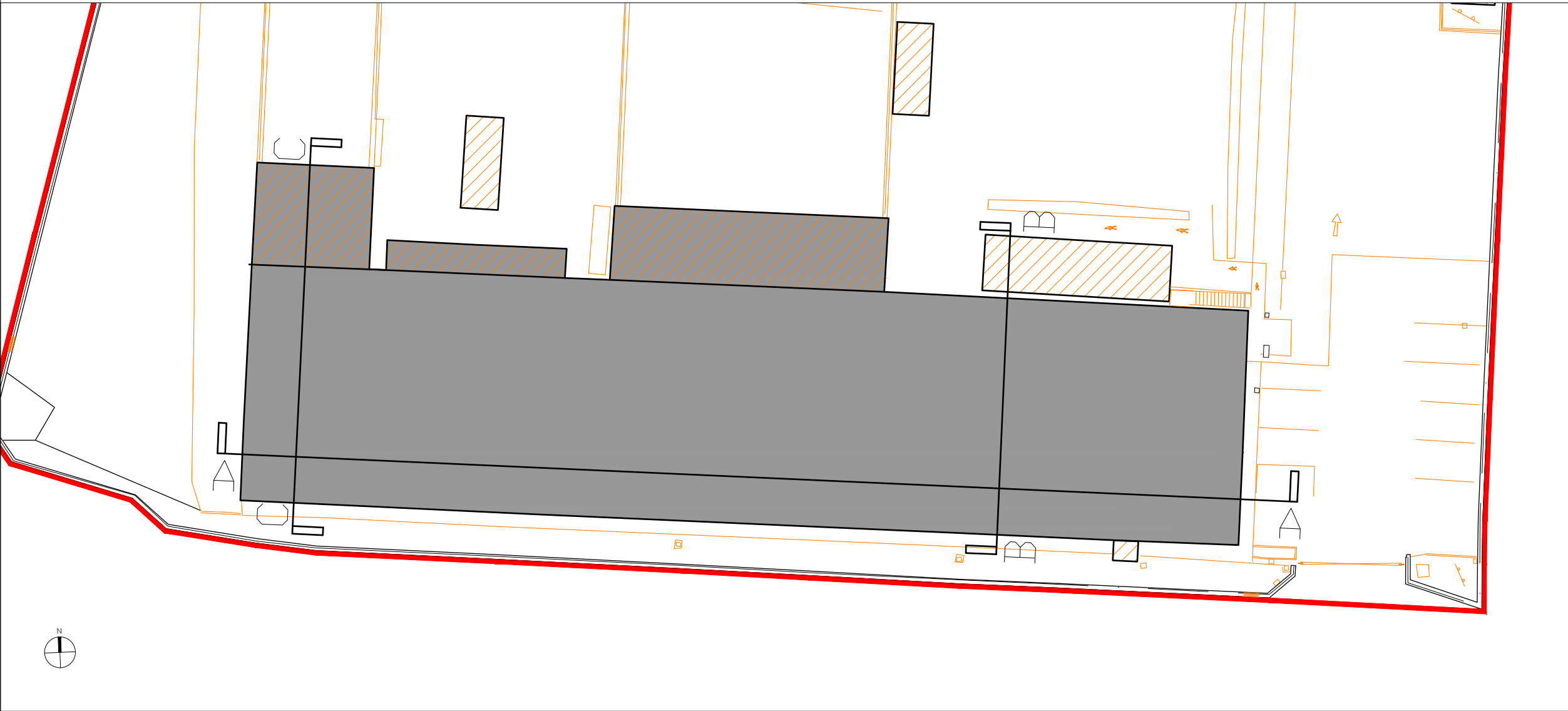


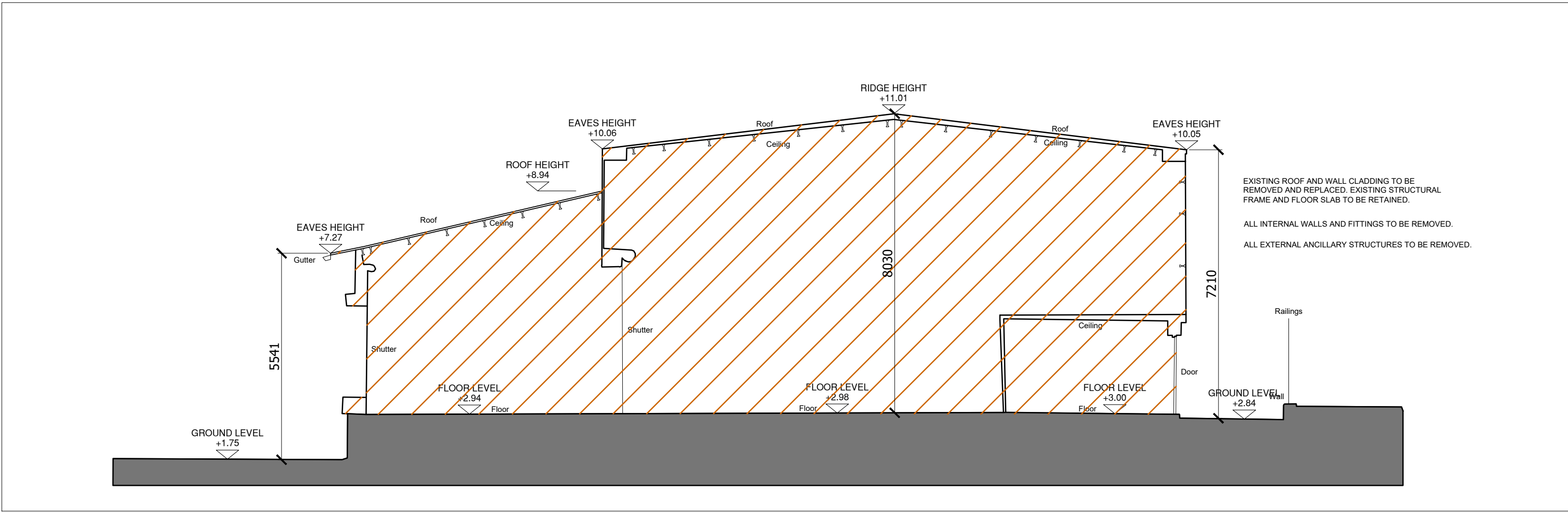
SECTION A_A
SCALE 1:100



SECTION B-B
SCALE 1:100



KEY PLAN
SCALE NTS



SECTION C-C
SCALE 1:100

LEGEND



ALL DIMENSIONS IN MILLIMETRES UNLESS OTHERWISE NOTED

Architectural Services			State / Principal Architect			Design Team			Drawing Revisions			Drawing Title			Project Title		
OPW Dublin, 52, St. Stephen's Gn, D2. Telephone: (01) 647 6000 LoCall: 1890 213414 Website: www.opw.ie			Ciarán O'Connor, FRIAI, State / Principal Architect Director of Architectural Services			Clíodhna Rice - MRAI Senior Architect Conor O'Donnell - MRAI Sarah Heery - MRAI Donal McIntyre - Graduate Architect			REF DESCRIPTION			DATE:			EXISTING SECTIONS Yard 4 Inspection Buildings		
A REV:			B REV:			C REV:			D REV:			E REV:			DRAWN		
DMcl			1:100 @A1			May 2020			PROJECT NO.			STATUS			NUMBER		
A.20.001			EIAR			10-300			REV.			Brexit Infrastructure at Dublin Port Dublin Port, Dublin 3					